

2022 marked the growth of a stronger Meals on Wheels Southwest OH & Northern KY, now one of the top five largest of its kind nationally. Our merge with another powerhouse organization—Cincinnati Area Senior Services—meant expansion to provide more holistic services to over 10,000 older adults to keep them healthy, safe, and in their homes. Our team of dedicated professionals and over 2,500 volunteers prepared and delivered over 1,000,000 meals in 11 counties across two states, making sure that seniors had quality nutritional support and consistent social connections.

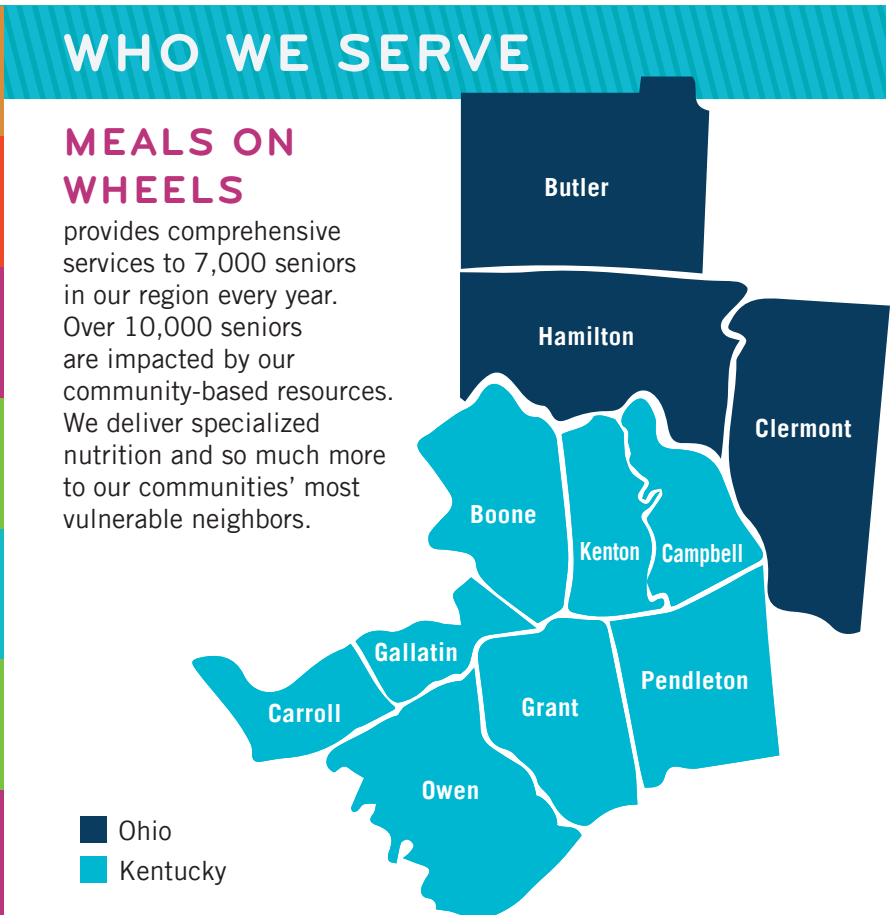
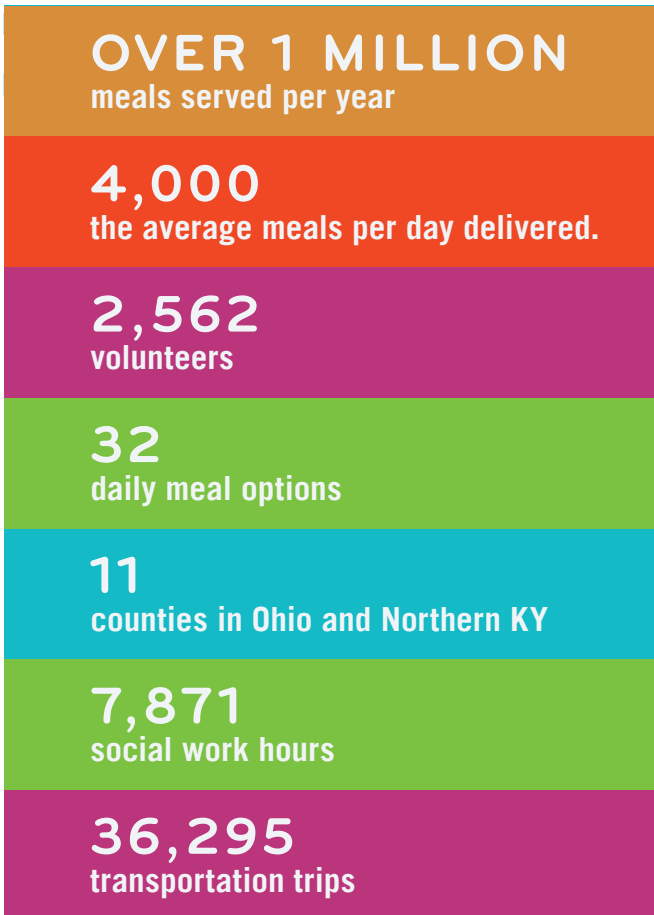
Our Protective Services program provides in-home case management, prevents housing disruptions and homelessness, keeps seniors from unnecessary institutionalization, meets critical emergency financial needs, protects the most vulnerable from financial exploitation and abuse, and literally saves lives.

Transportation services make sure seniors have rides to medical appointments, errands, and activities, including the Over-the-Rhine Senior Center, which is owned and operated by Meals on Wheels. Other opportunities for social

engagement include Virtual Senior Center programming: a combination of online and in-person enrichment, exercise, education, and connection all around the region. The Digital Connect program provides free tablets, internet connection, and hands-on training and tech support makes sure low-income seniors have access.

Research and innovation efforts around congregate meal programs are aimed at sustainable policy change—our nationally-recognized and presented market research and innovation experiments have focused on those older adults left behind by current programming and at highest risk of loneliness and isolation, in particular older men, Black, Hispanic, AAPI, and LGBTQ+ seniors.

Together, we offer *so much more than a meal*. As one-in-six seniors faces the threat of hunger and one-in-four suffers from loneliness and isolation, we continue to build capacity and our support base, preparing for a future USA where the older adult population will double by 2050. Seniors are part of our families, communities and economy. We all benefit when they can age with independence and dignity. Join us and, *together, we can deliver*.





MEALS ON WHEELS
SOUTHWEST OH & NORTHERN KY

MUCH MORE > THAN A MEAL

2022 ANNUAL REPORT

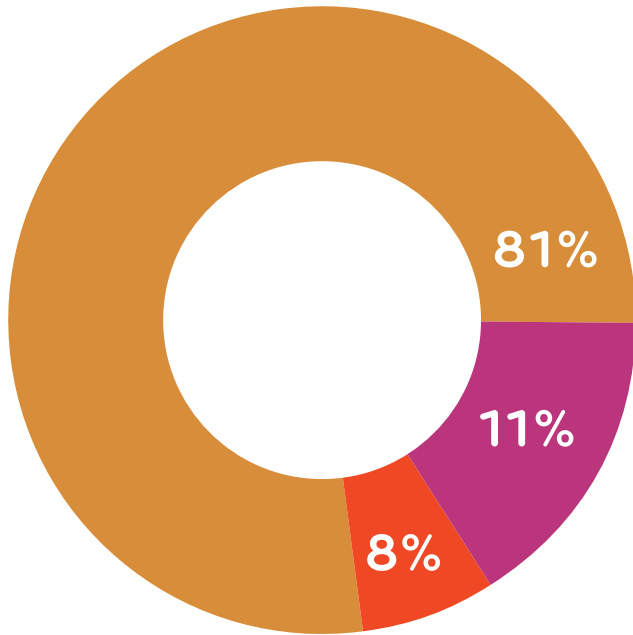
STATEMENT OF FINANCIAL ACTIVITY

\$14,400,000

TOTAL INCOME

\$11,264,000

ENDING NET ASSETS



\$11,985,000
TOTAL PROGRAM EXPENSES

\$1,625,000
TOTAL ADMINISTRATIVE EXPENSES

\$1,235,000
TOTAL FUNDRAISING EXPENSES



BOARD OF DIRECTORS

CHAIRPERSON

Michael Murphy
Champlin Architecture

VICE-CHAIR

Mary Wagner
iMFLUX, retired

SECRETARY

Tony Fenno
Right at Home

TREASURER

Dan Rozewski
Total Quality Logistics

IMMEDIATE PAST CHAIR

Daniel Driehaus
Driehaus Insurance Group

BOARD MEMBERS

Lyndsey Barnett
Bricker Graydon

Sara Celi
Author, Journalist

Tom Cooney
Wealth Dimensions Group

Renee Dunn
R.B. Dunn Consulting, LLC

Rob Jutze
Senior Impact Publications

Thomas Kaylor
Sequoia Consulting Group

Guinette Kirk
DNK

Danielle McColaugh
General Electric Company

Patrick O'Neill
Cors & Bassett LLC

Bart Richardson
Kroger

Andy Sathe
MCF

Mike Snow
Consultant

EMERITUS TRUSTEE

Mr. Robert Schilling
Champlin Architecture